



hall-0

suspension lamp wall lamp

hall-O

A circle lamp crafted from powder-coated aluminium. The U-shaped profile, with the light nestled inside, creates a beautifully calm and diffuse glow that transforms any room into a serene haven.

What makes this collection truly unique is the incredible variety of colors available for these circle lamps. Hall-O offers you the opportunity to design a piece that is perfectly tailored to your interior. We can't wait for you to explore the endless possibilities!



Wall set on the right
HA.135.WA.CI.T3.MR
& HA.70.WA.CI.T3.MO
hall-O wall lamp circle type 3
marone 135cm & hall-O wall lamp
circle type 3 moss 70cm

Type 3 is a special version with a power cable integrated in the wall and externally mounted driver.



HA.135.CI.VT.GM & HA.100.CI.VT.GM
hall-O suspension lamp circle vertical gunmetal 135cm & 100cm



HA.100.CI.VG, HA.135.CI.VG & HA.170.CI.VG
hall-O suspension lamp circle verdi grey 100cm, 135cm & 170cm



HA.170.CI.MO, HA.100.CI.MO & HA.135.CI.MO
hall-O suspension lamp circle moss 170cm, 100cm & 135cm

Project LUZANO



HA.100.WA.CI.T3.MR & HA.50.WA.CI.T3.MR
hall-O wall lamp circle type 3, 100cm & 50cm marone, external driver

Project Studio MBC
The Art of Living Magazine
Photography Jaro van Meerten

hall-O

suspension lamp circle

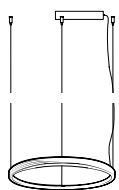


HA.100.CI.RR, HA.135.CI.RR & HA.170.CI.RR
hall-O suspension lamp circle ruby red 100cm, 135cm & 170cm

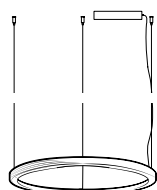
colors & materials

* Add the color/material code you require to the main part number or check our price list for a total part number overview.

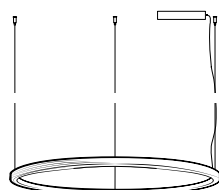
Check www.jaccomarism.com for the latest colors, materials and details or scan the QR code.



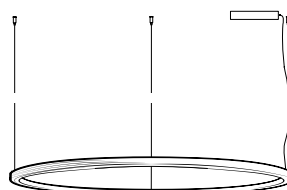
Ø 50cm



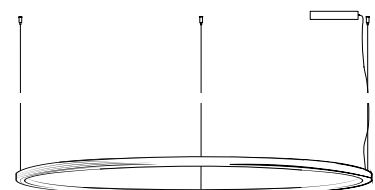
Ø 70cm



Ø 100cm



Ø 135cm



Ø 170cm

| | |
|-----------------------|---|
| Order code | HA.50.CI.* |
| Dimensions Ø | 50cm |
| Standard cable length | 300cm |
| Light source | integrated LED 30W / 2700K / 1200 lm |
| Net. weight | 1,2kg |
| Driver | dimnable driver, dimmer not included |

| | |
|-----------------------|---|
| Order code | HA.70.CI.* |
| Dimensions Ø | 70cm |
| Standard cable length | 300cm |
| Light source | integrated LED 42W / 2700K / 1700 lm |
| Net. weight | 1,7kg |
| Driver | dimnable driver, dimmer not included |

| | |
|-----------------------|---|
| Order code | HA.100.CI.* |
| Dimensions Ø | 100cm |
| Standard cable length | 300cm |
| Light source | integrated LED 60W / 2700K / 2400 lm |
| Net. weight | 2,4kg |
| Driver | dimnable driver, dimmer not included |

| | |
|-----------------------|---|
| Order code | HA.135.CI.* |
| Dimensions Ø | 135cm |
| Standard cable length | 300cm |
| Light source | integrated LED 80W / 2700K / 3250 lm |
| Net. weight | 3,3kg |
| Driver | dimnable driver, dimmer not included |

| | |
|-----------------------|--|
| Order code | HA.170.CI.* |
| Dimensions Ø | 170cm |
| Standard cable length | 300cm |
| Light source | integrated LED 103W / 2700K / 4000 lm |
| Net. weight | 4,1kg |
| Driver | dimnable driver, dimmer not included |

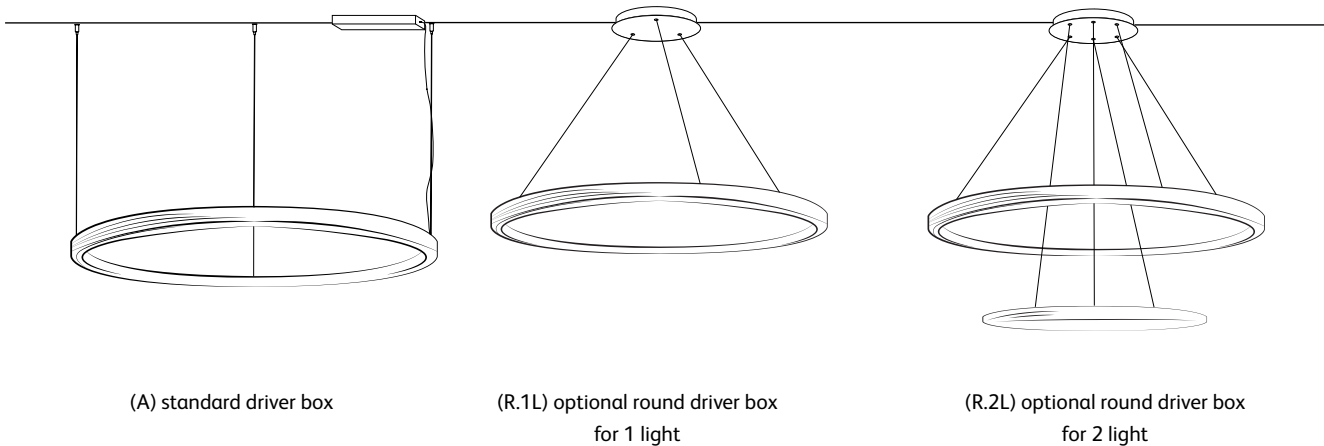
| | |
|---------------------|---|
| Standard driver box | 24x8x4cm white, optional round driver box |
|---------------------|---|

hall-O

driver box options

Hall-O is standard complemented with driver box (a) 24x8x4cm white. Please note that if you choose another driver box option below, driver box (a) will no longer be included.

| | |
|----------------------------|--|
| Standard driver box (A) | 24x8x4cm white (optional black) 3 steel suspension cables and 1 transparent power cable |
| Optional driver box (R.1L) | driver box round 1 light Ø23x4,5cm white (Ø26cm cover) (optional black or color fixture) 3 thin black cables (power cable and suspension cable in one). No separate power cable |
| Optional driver box (R.2L) | driver box round 2 light Ø23x4,5cm white (Ø26cm cover) (optional black or color fixture) 6 thin black cables (power cable and suspension cable in one). No separate power cables |



hall-O

suspension lamp circle vertical

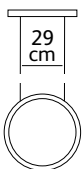


HA.100.CI.VT.GM & HA.135.CI.VT.GM
hall-O suspension lamp circle vertical gunmetal 100cm & 135cm

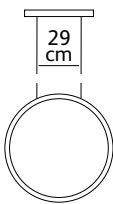
colors & materials

* Add the color/material code you require to the main part number or check our price list for a total part number overview.

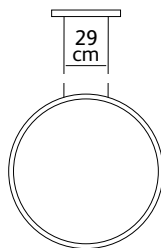
Check www.jaccomarism.com for the latest colors, materials and details or scan the QR code.



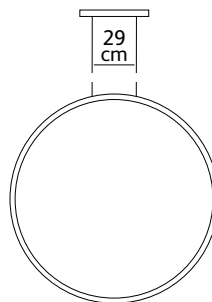
Ø 50cm



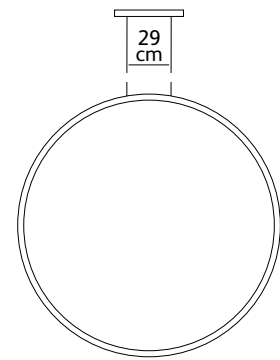
Ø 70cm



Ø 100cm



Ø 135cm



Ø 170cm

IP 20  

| | |
|-----------------------|---|
| Order code | HA.50.CI.VT.* |
| Dimensions Ø | 50cm |
| Standard cable length | 300cm |
| Light source | integrated LED 30W / 2700K / 1200 lm |
| Net. weight | 1,2kg |
| Driver | dimnable driver, dimmer included |

| | |
|-----------------------|---|
| Order code | HA.70.CI.VT.* |
| Dimensions Ø | 70cm |
| Standard cable length | 300cm |
| Light source | integrated LED 42W / 2700K / 1700 lm |
| Net. weight | 1,7kg |
| Driver | dimnable driver, dimmer not included |

| | |
|-----------------------|---|
| Order code | HA.100.CI.VT.* |
| Dimensions Ø | 100cm |
| Standard cable length | 300cm |
| Light source | integrated LED 60W / 2700K / 2400 lm |
| Net. weight | 2,4kg |
| Driver | dimnable driver, dimmer not included |

| | |
|-----------------------|---|
| Order code | HA.135.CI.VT.* |
| Dimensions Ø | 135cm |
| Standard cable length | 300cm |
| Light source | integrated LED 80W / 2700K / 3250 lm |
| Net. weight | 3,3kg |
| Driver | dimnable driver, dimmer not included |

| | |
|-----------------------|--|
| Order code | HA.170.CI.VT.* |
| Dimensions Ø | 170cm |
| Standard cable length | 300cm |
| Light source | integrated LED 103W / 2700K / 4000 lm |
| Net. weight | 4,1kg |
| Driver | dimnable driver, dimmer not included |

| | |
|---------------------|----------------------------------|
| Standard driver box | 26x6x3,5cm white, optional black |
|---------------------|----------------------------------|

hall-O

wall lamp circle type 2



HA.135.WA.CI.T3.MR & HA.70.WA.CI.T3.MO

hall-O wall lamp circle type 3 marone 135cm & hall-O wall lamp circle type 3 moss 70cm

Type 3 is a special version with a power cable integrated in the wall and externally mounted driver. Hall-O wall lamp circle type 2 is the standard version with natural rope cord and floor dimmer.

colors & materials

* Add the color/material code you require to the main part number or check our price list for a total part number overview.

Check www.jaccomarism.com for the latest colors, materials and details or scan the QR code.



| | |
|-----------------------|---|
| Order code | HA.50.WA.CI.T2.* |
| Dimensions Ø | 50cm |
| Standard cable length | 300cm |
| Light source | integrated LED 30W / 2700K / 1200 lm |
| Net. weight | 1,2kg |
| Driver | dimnable driver, floor dimmer included |

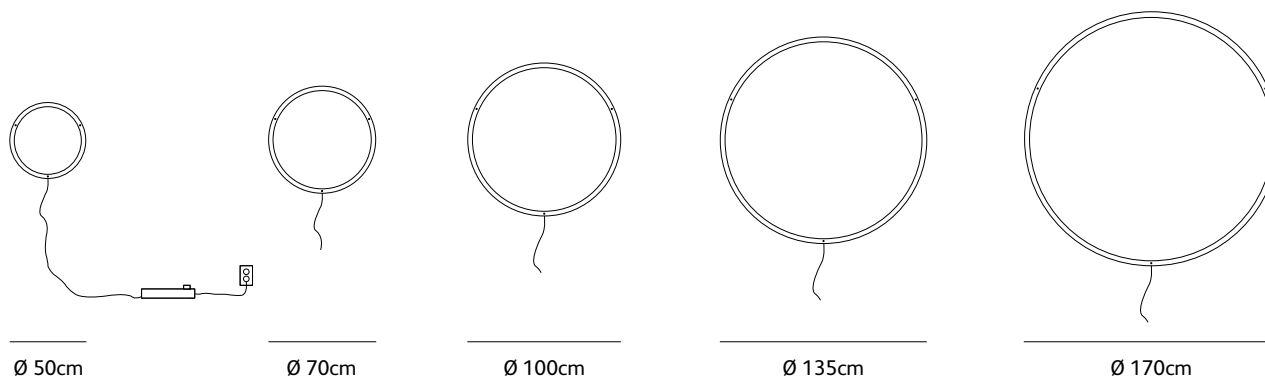
| | |
|-----------------------|---|
| Order code | HA.70.WA.CI.T2.* |
| Dimensions Ø | 70cm |
| Standard cable length | 300cm |
| Light source | integrated LED 42W / 2700K / 1700 lm |
| Net. weight | 1,7kg |
| Driver | dimnable driver, floor dimmer included |

| | |
|-----------------------|---|
| Order code | HA.100.WA.CI.T2.* |
| Dimensions Ø | 100cm |
| Standard cable length | 300cm |
| Light source | integrated LED 60W / 2700K / 2400 lm |
| Net. weight | 2,4kg |
| Driver | dimnable driver, floor dimmer included |

| | |
|-----------------------|---|
| Order code | HA.135.WA.CI.T2.* |
| Dimensions Ø | 135cm |
| Standard cable length | 300cm |
| Light source | integrated LED 80W / 2700K / 3250 lm |
| Net. weight | 3,3kg |
| Driver | dimnable driver, floor dimmer included |

| | |
|-----------------------|--|
| Order code | HA.170.WA.CI.T2.* |
| Dimensions Ø | 170cm |
| Standard cable length | 300cm |
| Light source | integrated LED 103W / 2700K / 4000 lm |
| Net. weight | 4,1kg |
| Driver | dimnable driver, floor dimmer included |

Wall lamp circle T3, type 3 (with external driver) on request.



IP 20  

hall-O

colors and materials

suspension lamp circle, suspension lamp circle vertical & wall lamp circle
standard powder coatings



* **AN** anodic brown



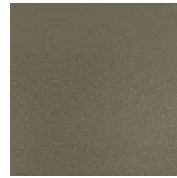
* **BL** black



* **GM** gunmetal



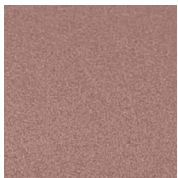
* **LA** latte



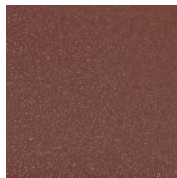
* **MO** moss



* **MR** marone



* **NA** navajo



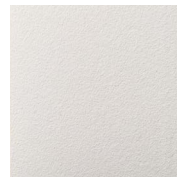
* **RR** ruby red



* **SA** sand



* **VG** verdi grey



* **WH** white

special powder coatings



* **CA** camel



* **EG** elephant grey



* **LS** light sand



* **NB** noble bronze



* **PB** powder blue



* **PP** powder pink



* **SW** shaded white