



## keep it straight suspension lamp

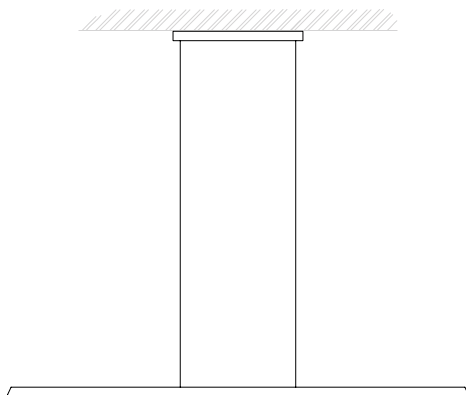
The Keep it Straight is great in its minimalistic and symmetrical design. Designer Jacco Maris managed to equip this slim fixture with a delicate diffuse light. Available in many beautiful finishes. At the tail-ends you will find subtle pieces of natural acrylic stone. These pieces are available in several colors. The Keep it Straight adds allure to any interior design, instantly transforming it into a luxurious space.

### Dimensions

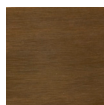
**120cm**

**160cm**

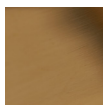
**200cm**



### materials

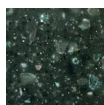


brushed  
brass

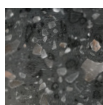


high gloss  
polished brass

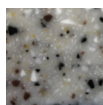
### colors tail ends (natural acrylic stone)



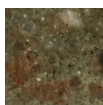
dark green



graphite grey



ivory white



rosemary green

For ordering or more information please contact your dealer or contact us for a dealer.  
Check [www.jaccomarism.com](http://www.jaccomarism.com) for the latest details.